



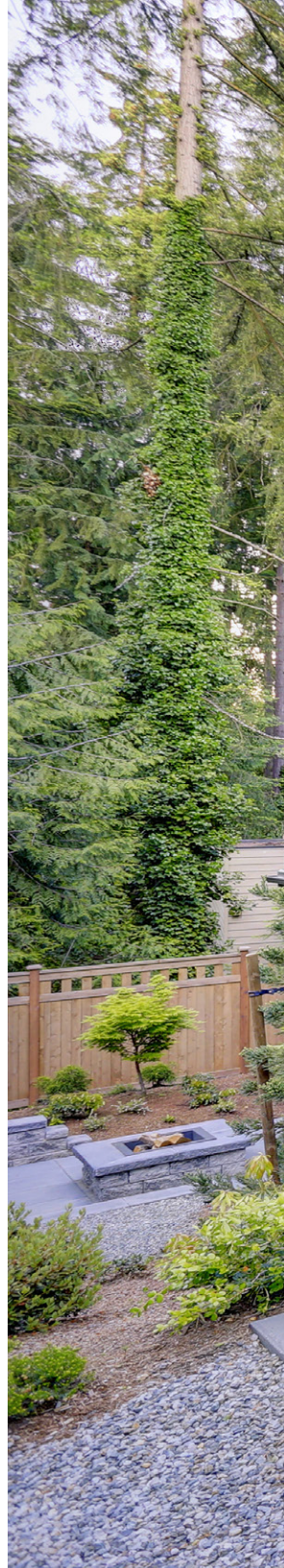
ALL NEW. BOLDLY REFINED.

T & L Series Grills



The American Original. Reimagined.

American Outdoor Grill enters a new era with a bold look, a redefined product line, and the same unwavering commitment to American craftsmanship that is backed by more than 8 decades of legacy. Our grills are engineered for reliability, designed with unmistakable presence, and built to deliver strength you can trust. Backed by an industry-leading warranty and superior customer service, this evolution stands as a testament to who we are: a brand crafted for excellence, rooted in authenticity, and built to connect families and communities around food and fire.



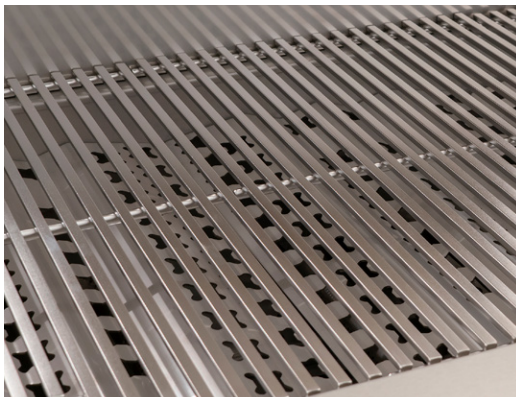


GRILL FEATURES | L/T Series



Large Analog Thermometer

Features a die cast alloy bezel with a Gun Metal finish for durability.



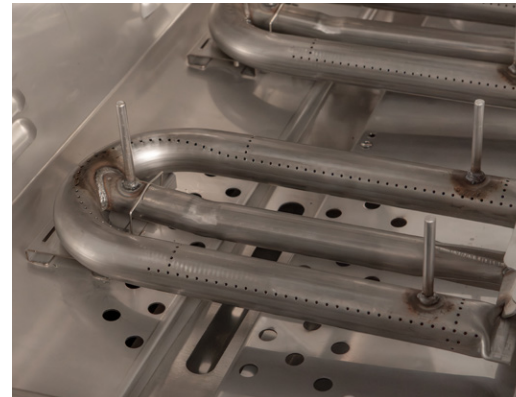
Diamond Sear Cooking Grids™

304 stainless steel provides ease of use and even heat distribution.



Spring-Assisted Hood

Features a rugged design with hidden spring-assist for ease of opening.



304 Stainless Steel Tubular Burners

Provide even heat and durability.



Redesigned Vaporizer Panels

Ensure even heat distribution and minimize flare ups.



L Featured on L-Series **T** Featured on T-Series



Heavy Duty Warming Rack

For additional warming space and indirect cooking.

L **T**



Interior Halogen Lights

For grilling well into the evening.

L



Accessible Knobs

Surrounded by die cast alloy bezels with Gun Metal finish.

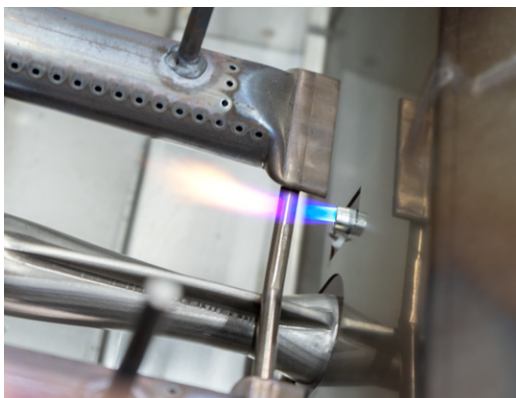
L **T**



Multi-Color Light Bar

With remote control to change colors to your liking. Convenient built-in pocket in drip tray to tuck away the remote control when not in use.

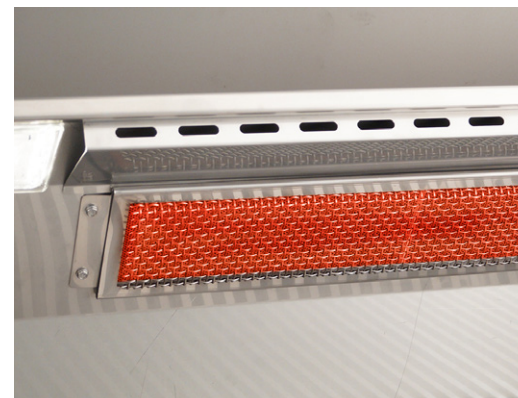
L



Flame Thrower Ignition

Turn-to-light piezo ignition offers easy and consistent lighting.

L **T**



Infrared Backburner

With rotisserie kit that includes spit rod, forks and motor.

L

L-SERIES GAS GRILLS

The L-Series grills make a bold statement with an external, multi-color LED light bar, interior halogen lights and striking Gun Metal finish throughout. The Flame Thrower ignition systems provides easy and consistent lighting. Designed to stand out after sunset, the L-Series brings elevated control and confidence to every cook. Requires 120 Volt AC power.



Feature Highlights

- Interior Halogen Lights
- External, Multi-Color LED Light Bar with Remote Control for Operation
- Remote Control & Pocket Holder in Drip Tray
- Infrared Backburner
- Rotisserie Kit (includes spit rod, forks and motor)
- LED Master Power Button
- Diamond Sear™ 304 Stainless Steel Cooking Grids
- Heavy Duty 304 SS Tubular Burners
- Flame Thrower Ignition System
- Heavy Duty Warming Rack
- Vaporizer Panels for Precise Heating Performance
- Spring-Assisted Hood
- Large Easy-to-Read Analog Thermometer with Die Cast Alloy Bezel in Gun Metal Finish
- Commercial Caliber Handle with Die Cast Alloy End Caps in Gun Metal Finish
- Accessible Control Knobs with Die Cast Alloy Bezels in Gun Metal Finish



AOG36LN(P)*

36" L-Series Built-In Grill

- Primary cooking surface: 648 sq. inches
- BTU's: 50,000 Primary + 12,000 Backburner
- Cut-out: 36¾" w x 19½" d x 8½" h
- Counter overhang cut-out: 40¾" w

Control Panel Options



Standard Stainless Steel



AOG30LN(P)*

30" L-Series Built-In Grill

- Primary cooking surface: 540 sq. inches
- BTU's: 45,000 Primary + 12,000 Backburner
- Cut-out: 30½" w x 19½" d x 8½" h
- Counter overhang cut-out: 34½" w



AOG24LN(P)*

24" L-Series Built-In Grill

- Primary cooking surface: 432 sq. inches
- BTU's: 32,000 Primary + 10,000 Backburner
- Cut-out: 24½" w x 19½" d x 8½" h
- Counter overhang cut-out: 28½" w



AO-36/30/24L-BLK
Accent Black Panel**



AO-36/30/24L-WHT
Accent White Panel**

* All grills include a gas conversion kit.

** See page 12 for Accent Color Panel accessory.

T-SERIES GAS GRILLS

The T-Series grills feature a Flame Thrower piezo ignition system that eliminates the need for electricity or batteries. Self-sufficient by design, they deliver dependable performance in any setting.



Feature Highlights

- Diamond Sear™ 304 Stainless Steel Cooking Grids
- Heavy Duty 304 SS Tubular Burners
- Flame Thrower Ignition System
- Heavy Duty Warming Rack
- Vaporizer Panels for Precise Heating Performance
- Spring-Assisted Hood
- Large Easy-to-Read Analog Thermometer with Die Cast Alloy Bezel in Gun Metal Finish
- Commercial Caliber Handle with Die Cast Alloy End Caps in Gun Metal Finish
- Accessible Control Knobs with Die Cast Alloy Bezels in Gun Metal Finish



AOG36TN(P)*

36" T-Series Built-In Grill

- Primary cooking surface: 648 sq. inches
- BTU's: 50,000 Primary
- Cut-out: 36¾" w x 19½" d x 8½" h
- Counter overhang cut-out: 40¾" w

Control Panel Options



Standard Stainless Steel



AOG30TN(P)*

30" T-Series Built-In Grill

- Primary cooking surface: 540 sq. inches
- BTU's: 45,000 Primary
- Cut-out: 30½" w x 19½" d x 8½" h
- Counter overhang cut-out: 34½" w



AOG24TN(P)*

24" T-Series Built-In Grill

- Primary cooking surface: 432 sq. inches
- BTU's: 32,000 Primary
- Cut-out: 24½" w x 19½" d x 8½" h
- Counter overhang cut-out: 28½" w



AO-36/30/24T-BLK
Accent Black Panel**



AO-36/30/24T-WHT
Accent White Panel**

* All grills include a gas conversion kit.

** See page 12 for Accent Color Panel accessory.

PORTABLE CART BASES

The **Portable Cart Bases** convert AOG 36", 30" and 24" gas built-in grills to portable units. They are compatible with both L-Series and T-Series grills.

Feature Highlights

- Access doors for storage
- Fold-down twin side shelves
- Tank ring holder included
- Optional Accent Black or White Door Panels available
- Gas connection hoses sold separately: For LP, use #5110-07 // For NG, use #5110-03 (10' hose w/ quick disconnect)
- Optional protective vinyl covers are available for all iterations



24CRT-25

24" Portable Cart Base

- Shown with 24" L-Series built-in grill (sold separately)
- See page 12 for Accent Color Panel accessory



30CRT-25 + CRT-30L-BLK

30" Portable Cart Base

- Shown with 30" T-Series built-in grill and Accent Black Panels (grill and panels sold separately)
- See page 12 for Accent Color Panel accessory



36CRT-25

36" Portable Cart Base

- Shown with 36" L-Series built-in grill (sold separately)
- See page 12 for Accent Color Panel accessory

PATIO AND IN-GROUND POST BASES

The **Patio and In-Ground Post Bases** convert 24" gas built-In grills to post units. They are compatible with both L-Series and T-Series grills.

Feature Highlights

- Rigid side shelves
- 1-hour timer installed on the post
- Gas connection hoses sold separately: For LP, use #5110-07 // For NG, use #5110-03 (10' hose w/ quick disconnect)
- Optional protective vinyl covers are available for all iterations



TH-PP-2
Tank Shield for
Patio Post Grill

AOG24-PP

24" Patio Post Base (37" Shelf Height)

- Shown with 24" L-Series built-in grill
(sold separately)



AOG24-GP

24" In-Ground Post Base (37" Shelf Height)

- Shown with 24" T-Series built-in grill
(sold separately)



AOG24-GA

24" Accessible In-Ground Post Base (32" Shelf Height)

- Shown with 24" L-Series built-in grill
(sold separately)



AOG24-PA

24" Accessible Patio Post Base (32" Shelf Height)

- Shown with 24" T-Series built-in grill
(sold separately)

PREMIUM ACCESSORIES



The Double Side Burner puts precise flame control at your command – ideal for preparing side dishes and sauces alongside your main meal. Available in L Series or T Series to seamlessly match your grill. Features two powerful 12,500 BTU burners, a durable stainless steel rod cooking grid and a sleek stainless steel cover.



AOG2SBL(P)

L-Series Built-In Double Side Burner

- Cut-out: 11½" w x 22¾" d x 8½" h
- Burner Btu's: 12,500 (x 2)
- Counter overhang cut-out: 16¼" w
- Optional Accent Black or White Panels available



AOG2SBT(P)

T-Series Built-In Double Side Burner

- Cut-out: 11½" w x 22¾" d x 8½" h
- Burner Btu's: 12,500 (x 2)
- Counter overhang cut-out: 16¼" w
- Optional Accent Black or White Panels available



Accent Color Panels

Add a touch of flair to any L-Series or T-Series grill and Double Side Burner with the Accent Color Panels.



Accent Black Panel

- AO-36/30/24L-BLK - L-Series Built-In Grills
- AO-36/30/24T-BLK - T-Series Built-In Grills
- CRT-36/30/24L(R)-BLK - Cart Doors
- AO-2SB-BLK - L-Series & T-Series Dbl Side Burner



Accent White Panel

- AO-36/30/24L-WHT - L-Series Built-In Grills
- AO-36/30/24T-WHT - T-Series Built-In Grills
- CRT-36/30/24L(R)-WHT - Cart Doors
- AO-2SB-WHT - L-Series & T-Series Dbl Side Burner



VHD-36

36" Vent Hood

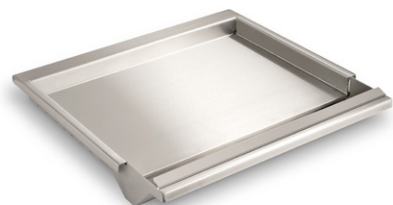
- Dimensions: 36" w x 18" h x 30" d
- 1000 CFM dual fan (may be configured either vertically or horizontally)
- Interior halogen lamps



24-IL-C, 30-IL-C, 36-IL-C

Insulating Liners

The Insulating Liner facilitates installation of built-in AOG grills into wood, composite or other combustible enclosures when used with non-combustible counter tops.



GR18A

Stainless Steel Griddle

- Dimensions: 18½" w x 17½" d



5521-11T

Stainless Steel Gas Timer Box

- Includes a 1-hour timer



REF-21

AOG Refrigerator

- Cut-out: 20" w x 21¾" d x 34¼" h
- Incl. lock & reversible door hinge



Vinyl Protective Covers

Protect your investment with a heavy duty AOG Vinyl Cover. Available for built-in and portable grills



TK-1

4-Pc. Tool Kit in Nylon Case

- Includes: tongs, basting brush, spatula, and meat fork



3092C

Automatic Timer Gas Shut-off

- Features a 1-hour timer



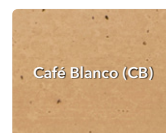
IP30L-SMD-77BA

30" Island Bundle

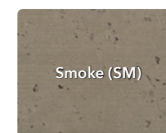
- Dimensions: 77" w x 36" d x 51" h
- Includes:
 - AOG20AR Horizontal Access Door
 - AOG15DD Double Drawer
 - AOG14TR Door w/ Tank Tray
 - 5521-11T 1-Hr. Timer Box
- Island base available in 7 GFRC finishes (shown below)
- Compatible with both L-Series & T-Series grills and side burners (sold separately)



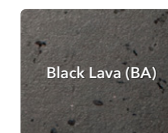
White Aspen (WA)



Café Blanco (CB)



Smoke (SM)



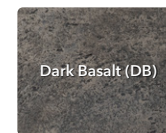
Black Lava (BA)



Travertine (TR)



Light Basalt (LB)



Dark Basalt (DB)

DOORS AND DRAWERS



AOG20AR(L)

14" x 20" Horizontal Access Door

- Cut-out: 15" h x 20½" w



AOG24AR(L)

17" x 24" Horizontal Access Door

- Cut-out: 18" h x 24½" w



AOG14AR(L)

20" x 14" Vertical Access Door

- Cut-out: 21" h x 14½" w



AOG14TR(L)

Door w/ Tank Tray & Louvers

- Cut-out: 21" h x 14½" w x 20½" d



AOG17AR(L)

24" x 17" Vertical Access Door

- Cut-out: 25" h x 17½" w



AOG30DA

20" x 30" Double Access Doors

- Cut-out: 21" h x 30" w



AOG39DA

16" x 39" Double Access Doors

- Cut-out: 16" h x 39" w



AOG15DD

Double Drawer

- Cut-out: 16" h x 14½" w x 20½" d



AOG30UD

30" Utility Drawer

- Cut-out: 13" h x 31" w x 20½" d



AOG30ADD

Door w/ Double Drawer

- Cut-out: 18½" h x 30" w x 26" d



AOG36ADP

Door w/ Double Drawer & Platter Storage

- Cut-out: 18½" h x 36½" w x 26" d



20-30-SD
20" x 30" Double Access Doors
 • Cut-out: 20½" h x 30" w



17-24-SD
17" x 24" Horizontal Access Door
 • Cut-out: 17½" h x 24½" w



14-20-SD
14" x 20" Horizontal Access Door
 • Cut-out: 14½" h x 20½" w



12-18-SD
12" x 18" Horizontal Access Door
 • Cut-out: 12½" h x 18½" w



24-17-SD
24" x 17" Vertical Access Door
 • Cut-out: 24½" h x 17½" w



20-14-SD
20" x 14" Vertical Access Door
 • Cut-out: 20½" h x 14½" w



18-12-SD
18" x 12" Vertical Access Door
 • Cut-out: 18½" h x 12½" w



20-14-SDV
20" x 14" Access Door w/ Louvers
 • Cut-out: 20½" h x 14½" w

AMERICAN OUTDOOR GRILL LIMITED WARRANTY

- AOG warrants your grill to be free from defects in material and workmanship.
- AOG stainless-steel burners and stainless-steel barbecue housings are warranted for as long as the original purchaser owns them -- **LIFETIME**.
- AOG Diamond sear stainless-steel cooking grids are warranted for **FIFTEEN (15) YEARS**.
- AOG valves, controls, manifolds and vent hood housings are warranted for **TEN (10) YEARS**. (Except as noted below.)
- AOG backburners, rotisserie kits, vaporizer panels, and exterior Glass Fiber Reinforced Concrete (GFRC) grill island systems are warranted for **THREE (3) YEARS**.
- AOG ignition systems (excluding batteries), electronic components (including vent hood controls and blowers), grill parts and accessories are warranted for **TWO (2) YEARS**.

THE ROBERT H. PETERSON CO. RESERVES THE RIGHT TO AMEND PRODUCT SPECIFICATIONS WITHOUT PRIOR NOTICE.



sales@fandcdistributors.com ~ 630-241-0506

L-E1-00126
Rev. 0 - 2512311100