



BLAZETM

OUTDOOR KITCHENS + GRILLS



Our Story

We set out to create a line of grills and outdoor kitchen products that wouldn't break down.

That was the beginning for Blaze. We studied and inspected what was currently on the market, identified the weaknesses and then started from scratch. What emerged was a collection of products that were easy to use and engineered to last, backed by a best-in-class, lifetime warranty*—because we mean it.

**Learn more about our industry-leading warranty at blazegrills.com/warranty*



Effortless by Design

The Blaze product line isn't complicated (like other brands).

We design products that allow everyone to experience their high quality. But simple to use and maintain doesn't mean unsophisticated.

Our style combines sleek and modern elements so that each Blaze product is constructed to meet our standards of excellence and efficiency.







Engineered for Life

To this day, we build outdoor living products better.

Well after other brands have been left on the curb, Blaze grills and outdoor kitchen equipment will continue to serve as centerpieces for our customers' spaces. That's what makes us Blaze. Visit **blazegrills.com** to find a local or online retailer.

Better designs.

Purposefully simple

Better materials.

Stronger and superior

Better functionality.

Best-in-class, lifetime warranties







Our Warranty

Proud to Stand Behind Every Product

Blaze gas grills are backed by a best-in-class, lifetime warranty that warrants against any defects in the manufacturing and workmanship on the cooking grids, stainless steel housing, stainless steel burners, flame tamers, heat zone separators, control valves, and all other stainless steel components.

Electrical and ignition components are covered for one year after the date of purchase. Grills must be registered within thirty days for the warranty to apply.



Our Collections

We're proud to offer products for every outdoor cooking need, from the weekend griller to the most dedicated outdoor chef.

The cornerstone of our entire catalog, these grills—and their corresponding burners or specialty cookers—embody Blaze: effortless by design, engineered for life.





BCM

Our designated workhorse, the BCM features the foundation of our higher-end models but without the added performance features for pure, uncomplicated grilling.



LTE+

The LTE+ is our bestseller for good reason: solid construction and strategic engineering combine to deliver a premium outdoor cooking experience every single time.



LTE PRO

The LTE PRO is our most advanced model. Its cutting-edge design includes a digital temperature screen and upgrades to provide intense power with minimal effort.



LUX

In a class of its own, the LUX is an intentionally streamlined model built with the thickest stainless steel components for exceptional performance and a luxury aesthetic.





Outdoor Cooking

The beating heart of your backyard—explore the grills, specialty cookers, and power burners to create with confidence.

GAS GRILLS

LUX Gas Grill	14
LTE PRO Gas Grill	15
LTE+ Gas Grill	16
LTE+ Marine Grade Gas Grill	17
BCM Gas Grill	18

GAS GRILL UPGRADES

Extendable Prep Cart	20
Ceramic Flame Tamers	21

GRIDDLES

LTE PRO Gas Griddle	22
LTE+ Gas Griddle	23

CHARCOAL GRILLS

Kamado Grill	24
--------------------	----

OUTDOOR OVEN

Outdoor Oven	25
--------------------	----

BURNERS

Side Burners + Power Burners	26
------------------------------------	----

COOKING ACCESSORIES

Grill + Griddle	28
Kamado	30

The dimensions listed in the following pages are subject to change and should be used for informational purposes only. Please check your product owner's manual to verify cutout information.

**3-BURNER/4-BURNER****LUX Gas Grill**

From the streamlined style and exceptional strength of thick, heavy-duty 304-grade stainless steel construction to the ultra-efficient performance, every inch of the LUX is designed for an unmatched cooking experience.

All told, this grill is an eye-catching outdoor centerpiece that will impress guests with its luxury aesthetics, performance, and longevity.

Enjoy your Blaze grill freestanding on a cart or built into your outdoor kitchen island.

BLZ-4PRO-LP/NG

Dimensions: 44 $\frac{1}{8}$ " W x 28 $\frac{3}{8}$ " D x 24 $\frac{1}{8}$ " H
Cutout Dimensions: 42 $\frac{1}{2}$ " W x 23 $\frac{5}{8}$ " D x 10 $\frac{1}{2}$ " H

BLZ-4PRO-CART-LTSC

Dimensions: 75 $\frac{7}{8}$ " W x 24" D x 35 $\frac{1}{8}$ " H

BLZ-3PRO-LP/NG

Dimensions: 34" W x 28 $\frac{3}{4}$ " D x 24 $\frac{1}{4}$ " H
Cutout Dimensions: 32 $\frac{1}{4}$ " W x 23 $\frac{5}{8}$ " D x 10 $\frac{1}{2}$ " H

BLZ-3PRO-CART-LTSC

Dimensions: 65 $\frac{5}{8}$ " W x 24" D x 35 $\frac{1}{8}$ " H

- Heavy-duty 304-grade stainless steel construction is backed by a best-in-class, lifetime warranty.
- 18,000 BTUs per burner for efficient cooking power.
- Push-and-turn flamethrower ignition with backup flashtube and crossover channels for each burner ensures a reliable flame with every start.
- Double-lined, 304 stainless steel grill hood protects the outer layer from heat discoloration and retains steady, high heat.
- 10,000-BTU infrared burner with an included rotisserie kit for slow-roasted dishes.
- The 12 mm-thick, heavy-duty hexagonal cooking rods soak up heat to produce exceptional sear marks.
- Professional-quality cast stainless steel H-burners deliver unrivaled cooking power and durability.
- Removable heat zone separators divide the cooking surface into individual temperature zones, putting you in command of every square inch of space.
- Sophisticated lighting system includes internal halogen lights and signature red LED-illuminated control knobs.

4-BURNER/5-BURNER

LTE PRO Gas Grill



Introducing the most advanced LTE model yet: the LTE PRO. Inspired by our modern new brand look, this grill is designed to provide even more power to users without requiring extra effort. That includes 14,000-BTU main burners, plus a 10,000-BTU rear burner for impressive zonal power.

The LTE PRO is built from heavy-duty 304-grade stainless steel and features stainless steel flame tamers to ensure the most even heat distribution across the grill surface. Like all Blaze grills, the LTE PRO is backed by a best-in-class, lifetime warranty, so you can buy confidently and take your cooking to the next level.

Add the optional Extendable Prep Cart to your freestanding grill for flexible prep and storage.

BLZ-4LTEPRO-LP/NG

Dimensions: 32½" W x 27" D x 22½" H
Cutout Dimensions: 30¾" W x 21¼" D x 9½" H

BLZ-4LTEPRO-CART-LTSC

Dimensions: 63⅞" W x 24½" D x 35½" H

BLZ-5LTEPRO-LP/NG

Dimensions: 40½" W x 27" D x 22½" H
Cutout Dimensions: 38" W x 21¼" D x 9½" H

BLZ-5LTEPRO-CART-LTSC

Dimensions: 71⅞" W x 24½" D x 35½" H

FEATURES:



Digital Temperature Screen

Enhanced control panel reads temperature from grill surface + 2 meat probes.



Larger Capacity Fire Box

Increased hood clearance allows more food in the fire box or added rotisserie space.



Ergonomic Handle

Spring-assisted grill hood with rolling "H" handle for the smoothest operation.



Innovative Warming Rack

Multipurpose, heavy-duty warming rack can now be stored in an upright position.



Upgraded Control System

Non-slip, knurled knobs feature LED lights with temperature indicators for safety.



Improved Grill Grates

Thicker 12 mm hexagonal grill grates retain more heat for intense searing.



GAS GRILLS

**FEATURES:****Automatic Lighting System**

Magnet latch triggers automatic interior halogen lighting while in use.

**Easy-Lift Hood**

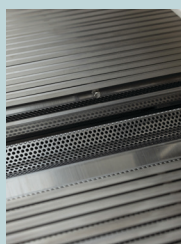
Innovative hood-assist mechanism makes opening and closing effortless.

**Streamlined Control Panel**

Laser-cut knobs feature LED red backlighting for safety and a decorative accent.

**Perforated Flame Tamers**

Full-coverage flame-stabilizing grids minimize flare-ups and protect burners.

**Heat Zone Separators**

Removable separators divide the cooking surface into individual temperature zones.

4-BURNER/5-BURNER**LTE+ Gas Grill**

Thoughtfully engineered and built to perform, our bestselling LTE+ Gas Grill provides the premium cooking experience every outdoor cook deserves.

Built from heavy-duty 304-grade stainless steel, this grill includes a double-lined hood to protect the outer layer from heat discoloration and retain steady, high heat. Cast stainless steel linear burners deliver impressive cooking power, and at 14,000 BTUs apiece, they do so efficiently. Not to mention the 10,000-BTU infrared rear burner, which lets you put on a show with succulently slow-roasted dishes.

For those who want power, reliability, and refined design all in one grill, the LTE+ delivers on every detail.

Add the optional Extendable Prep Cart to your freestanding grill for flexible prep and storage.

BLZ-4LTE3-LP/NG

Dimensions: 32½" W x 25¾" D x 21¼" H

Cutout Dimensions: 30⅝" W x 21¼" D x 8½" H

BLZ-4-CART-SC

Dimensions: 55¾" W x 22⅛" D x 35½" H

BLZ-5LTE3-LP/NG

Dimensions: 39½" W x 25¾" D x 21¼" H

Cutout Dimensions: 38⅝" W x 21¼" D x 8½" H

BLZ-5-CART-SC

Dimensions: 63½" W x 22⅛" D x 35½" H

4-BURNER

LTE+ Marine Grade Gas Grill



For those in coastal climates, Blaze offers LTE+ models built from marine grade 316L stainless steel, an alloy with extra resistance to saltwater environments. It's the only marine grade grill in its class.

This 4-burner grill is also rated for multi-user applications such as multi-family dwellings, apartments, hotels, and, of course, seaside condos. Under this 1-year multi-family warranty, Blaze also extends its usual lifetime coverage to include labor charges.

BLZ-4LTE3MG-LP/NG

Dimensions: 32½" W x 25¾" D x 21¼" H

Cutout Dimensions: 30⅝" W x 21¼" D x 8½" H

BLZ-4-CART-SC

Dimensions: 55¾" W x 22⅞" D x 35½" H

- Automatic safety glow interior halogen lighting keeps lights on during use for better visibility.
- An innovative hood-assist mechanism makes opening and closing the grill effortless.
- Laser-cut control knobs feature LED red backlighting for safety and a signature decorative accent.
- Patented* 9 mm triangular cooking rods maximize your searing capabilities.
- 14,000 BTUs per burner for the most efficient cooking power + 10,000-BTU infrared rear.
- Designed to minimize flare-ups, the perforated full-coverage flame-stabilizing grids also serve as excellent protection for the burners below.
- Cast stainless steel linear burners lit by a push-and-turn flamethrower primary ignition system.
- Removable heat zone separators divide the cooking surface into individual temperature zones, putting you in command of every square inch of space.
- Heavy-duty 304-grade stainless steel construction with double-lined grill hood protects outer layer from heat discoloration and retains steady, high heat.

*blazegrills.com/patent



**3-BURNER/4-BURNER****BCM Gas Grill**

The Builder Classic Model is all function, providing you with an affordable, commercial-style gas grill that any outdoor cook can easily enjoy.

No matter the installation site—whether it's a multifamily dwelling, apartment complex, or common backyard—these grills are built to last and turn everyone into a grill master.

BLZ-3BCM-LP/NG

Dimensions: 25" W x 25³/₄" D x 21¹/₄" H

Cutout Dimensions: 23¹/₄" W x 21¹/₄" D x 8¹/₂" H

BLZ-3-CART-SC

Dimensions: 49" W x 22¹/₁₆" D x 35¹/₂" H

BLZ-4BCM-LP/NG

Dimensions: 32¹/₂" W x 25³/₄" D x 21¹/₄" H

Cutout Dimensions: 30⁵/₈" W x 21¹/₄" D x 8¹/₂" H

BLZ-4-CART-SC

Dimensions: 55³/₄" W x 22¹/₁₆" D x 35¹/₂" H

- Commercial-quality, cast 304-grade stainless steel burners feature 14,000 BTUs of cooking power each.
- Control system with streamlined knob design for independent heat adjustments.
- Double-lined, 304 stainless steel grill hood protects outer layer from heat discoloration and retains steady, high heat.
- Full-width, roll-out drip tray and removable lower heat baffles for easy cleanup.
- Removable heat zone separators divide the cooking surface into individual temperature zones, putting you in command of every square inch of space.
- Designed to minimize flare-ups, the perforated flame-stabilizing grids also serve as excellent protection for the burners below.
- Durable, heavy-duty 9 mm triangular stainless steel cooking rods provide exceptional sear marks.
- Push-and-turn flamethrower primary ignition system delivers a fast start every time.





UPGRADES

Extendable Prep Cart



Functional, flexible, and transformative, the Extendable Prep Cart instantly turns your freestanding grill into a mobile island—adding storage and prep space exactly where you need it.

Designed to work with the LTE+ and LTE PRO gas grills or as a standalone unit, its modular, reversible design allows it to switch sides easily to fit any layout. Built-in storage and prep features keep tools, accessories, and essentials close at hand.

It's a practical solution for anyone who wants the freedom to evolve their setup over time.

- Built from durable 304 stainless steel for long-lasting outdoor performance.
- Waterproof dry storage is concealed beneath the hinged cutting board.
- A built-in HDPE cutting board provides a durable, food-safe prep surface.
- Two stainless steel pull-out drawers and open shelving offer organized storage.
- Six built-in hooks and a bottle opener keep essentials within reach.
- Four locking casters provide smooth mobility and secure placement.

BLZ-LTEPRO-360CART

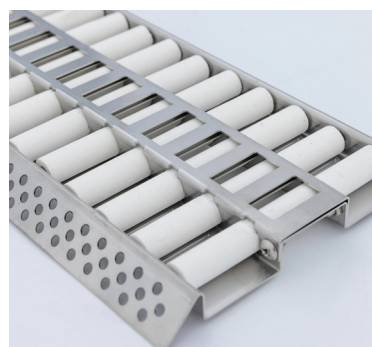
Dimensions: 24⁵/₈" W x 23³/₁₆" D x 36" H

BLZ-LTE3-360CART

Dimensions: 24⁵/₈" W x 23³/₁₆" D x 35³/₈" H

UPGRADES

Ceramic Flame Tamers



Intended to replace your standard flame tamer set, these Ceramic Flame Tamers are the perfect upgrade for those seeking to enhance their grilling capabilities.

Enjoy better-tasting food as the ceramic rods absorb drippings from your cook and vaporize them, creating a flavorful smoke that infuses into the food. But vaporization doesn't mean flare-ups because the round design allows grease to easily roll off, making grilling safe and more convenient, especially when cooking fatty meats.

It's the perfect addition to your Blaze grill, providing even heat and maximum flavor with minimum maintenance.

Designed for use with all sizes of BCM, LTE+, and LTE PRO gas grills only. Not for use with LUX grills.

- 304 stainless steel flame tamer tray paired with ceramic rods delivers enhanced flavor.
- Built to withstand high temperatures without deteriorating and less likely to rust/degrade.
- Engineered to deliver intense yet uniform heat, perfect for cooking a variety of dishes.
- Reduce flare-ups with round rod design, allowing grease to vaporize and roll off easily.
- Food debris can be easily burned off after each cook for the easiest cleanup.

BLZ-CRM-TMR



UPGRADES



FEATURES:



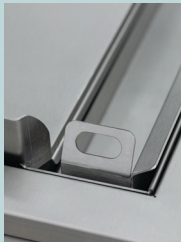
Heavy-Duty Surface
Reinforced stainless steel cooking surface retains more heat.



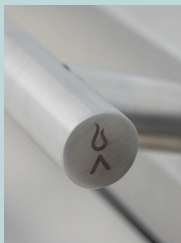
Digital Temperature Screen
Enhanced control panel reads temperature from 3 zones + 3 meat probes.



Adjustable Surface
Integrated leveling screws can adjust the surface according to foods being cooked.



Full-Size Drip Trough
Drop-in-place drip trough simplifies grease management and improves safety.



Ergonomic Handle
"H" handle with rotating center ensures ease of use when lifting the lid.



Sound Dampers
Cushioned sound dampers prevent the attached lid from ever slamming shut.

40-INCH

LTE PRO Gas Griddle



Built with a reinforced cooking surface and attached lid, the LTE PRO Griddle is the heaviest in its class, promising exceptional durability and longevity. Its modern design ensures even heat across the 40-inch surface for the most consistent results.

The three separate cooking zones provide complete cooking versatility, with the three burners efficiently producing 15,000 BTUs each, for a total of 45,000 BTUs. Add in innovations like non-slip, knurled knobs featuring LED lights with temperature indicators for safety and you've got a restaurant-caliber griddle that delivers professional-grade performance in your yard.

BLZ-GRIDDLE40-LP/NG

Dimensions: 40" W x 29" D x 16⁵/₁₆" H

Cutout Dimensions: 37¹/₂" W x 24¹/₄" D x 11³/₁₆" H

BLZ-GRIDDLE40-CART-LTSC

Dimensions: 71¹/₂" W x 27⁵/₈" D x 35¹/₂" H

30-INCH

LTE+ Gas Griddle



An upgraded griddle for backyard chefs of all levels, the 30-Inch LTE+ includes new and improved features such as an updated control panel and sound dampers, as well as a reinforced cooking surface. In other words, it's a premium cooking experience.

The 304 stainless steel construction now includes a double-walled, attached lid. Two 15,000-BTU burners offer efficient cooking power, and with the strategic enhancements found across the entire Blaze LTE+ lineup—such as larger peepholes that allow for safe and clear monitoring of the burners—this griddle is ready for your outdoor kitchen.

BLZ-GRIDDLE-LTE3-LP/NG

Dimensions: 30 $\frac{1}{8}$ " W x 28 $\frac{1}{4}$ " D x 16 $\frac{5}{16}$ " H

Cutout Dimensions: 28 $\frac{1}{4}$ " W x 24 $\frac{1}{4}$ " D x 11 $\frac{1}{16}$ " H

BLZ-GRIDDLE-CART-SC2

Dimensions: 54" W x 25 $\frac{1}{16}$ " D x 35 $\frac{1}{2}$ " H

FEATURES:



Streamlined Control System

Panel with knobs that shine red when gas is flowing for added safety.



Full-Size Drip Trough

Drop-in-place drip trough simplifies grease management for effortless cleanup.



Adjustable Surface

Integrated leveling screws can adjust the surface according to foods being cooked.



Reliable Flattop

Cooking surface ensures performance at even the highest temperatures.



Sound Dampers

Cushioned sound dampers prevent the lid from ever slamming closed.



Attached Lid

Protects griddle surface from outdoor elements.



GRIDDLES



FEATURES:



Molded Exhaust Cap
Cast-molded exhaust cap allows for precise heat control.



1-Inch-Thick Cast Aluminum
This design adds unparalleled durability.



Lift Assist
Pre-installed lid hinge with lift assist allows for easy opening and burping of the kamado.



Cooking Grid
20-inch diameter stainless steel hex-shaped cooking surface provides exceptional heat retention and beautiful sear marks.



Hinged Cooking Surface
Hinged cooking surface allows for the convenient addition of wood or charcoal without removing the grates.



Tongue-and-Groove Seal
Instead of the traditional gasket design, which often needs replacement because of wear and tear, the tongue-and-groove seal helps the lid last longer and better lock in smoke.

20-INCH CAST ALUMINUM

Kamado Grill



Blaze took lessons learned from centuries of kamado-style cooking and introduced a modern twist by building this patented kamado* with 1-inch-thick solid cast aluminum.

This cast aluminum design provides unparalleled durability—whether it's exposed to extreme saltwater or any other conditions that would wreak havoc on a ceramic kamado—plus the same outstanding temperature control and heat retention traditional kamados are so well known for.

With a lifetime warranty on the cast aluminum body and other key components, kamado purists can confidently break from tradition to experience a superior grill engineered for luxury cooking.

BLZ-20-KAMADO

Dimensions: 21 $\frac{7}{8}$ " W x 27 $\frac{7}{8}$ " D x 33 $\frac{7}{8}$ " H

BLZ-20-KMDO-CART-SC

Dimensions: 48 $\frac{1}{4}$ " W x 28 $\frac{1}{4}$ " D x 38 $\frac{1}{4}$ " H

26-INCH

Outdoor Oven



Designed for ease and versatility, the Outdoor Oven delivers restaurant-quality results to your backyard. And with a rotisserie basket and cooking racks, you'll just as easily prepare a sumptuous rack of lamb as a delicious personal pie.

It's a true outdoor oven that'll let you cook just about anything. The streamlined digital display and new wireless meat probes give you precise, real-time temperature control—so perfect results are always within reach.

Available in freestanding, countertop, and built-in configurations.

BLZ-26-PZOVN-LP/NG

Dimensions: 26" W x 29³/₁₆" D x 23¹/₄" H
Cutout Dimensions: 24¹/₂" W x 24⁵/₁₆" D x 8⁹/₁₆" H

BLZ-26-PZOVN-TBL

Dimensions: 27¹³/₁₆" W x 25³/₁₆" D x 12¹/₄" H

BLZ-26-PZOVN-CART2

Dimensions: 50¹/₁₆" W x 25¹/₄" D x 35¹/₂" H

FEATURES:



Bluetooth Probes

Wireless Bluetooth probes with real-time on-screen temperature readouts for precise, confident cooking.



Rotating Ceramic Pizza Stone

17-inch pizza stone ensures an even bake every time—no hand-turning required.



Rotisserie Kit + 2 Cooking Racks

Vertical rotisserie rod paired with dual cooking racks expands what you can cook, from slow-roasted proteins to multi-rack meals.



New Digital Display

Digital screen offers the most accurate cooking temperatures.



Double-Walled Glass Door

Retains heat while giving you a clear view of your cook without opening the oven.



Powerful Heat Performance

Temperatures reaches up to 550°F, with the stone surface capable of exceeding 700°F for exceptional high-heat cooking.



OUTDOOR OVEN



BURNERS

Side Burners + Power Burners

To complement your Blaze grill and complete your outdoor kitchen, we offer a selection of side burners and power burners.

Whatever your demands, Blaze burners deliver a reliable flame with every start, thanks to the push-and-turn ignition system also found on our grills.

Each burner in the set features a stainless steel cover to block the outdoor elements, backlit knob lighting, and full-width drip trays for speedy cleanup.

Our side burners and power burners are all built with 304-grade stainless steel and covered by the best-in-class, lifetime warranty upon which the Blaze brand was built.

BURNERS



LUX Built-In Power Burner

- A staggering total of 60,000 BTUs between the 25,000-BTU inner ring and the 35,000-BTU outer ring.
- Efficient design and narrow width save cooking time and counter space.
- Burner rings are circled by a stainless steel guard that blocks wind interference and channels maximum heat efficiency.

BLZ-PROPB-LP/NG

Dimensions: 15 $\frac{3}{4}$ " W x 23" D x 11 $\frac{1}{4}$ " H
Cutout Dimensions: 14" W x 19 $\frac{1}{2}$ " D x 9 $\frac{1}{4}$ " H



LTE PRO Built-In Power Burner

- Efficient design brings water to a boil in half the time compared to other power burners on the market.
- A narrow width allows for other components or more counter space.
- Stainless steel guard surrounds the burner rings protecting them from the wind and concentrates heat for maximum efficiency.
- Illuminated control knobs for a sophisticated appearance.
- Push and turn knob ignition system delivers a reliable flame with every start.

BLZ-PBLTEPRO-LP/NG

Dimensions: 15 $\frac{3}{4}$ " W x 23" D x 11 $\frac{1}{4}$ " H
Cutout Dimensions: 14" W x 19 $\frac{1}{2}$ " D x 9 $\frac{1}{4}$ " H



LTE+ Built-In Single Side Burner

- A heavy-duty, 12,000-BTU brass burner provides superior heat output.
- LED-illuminated control system with safety glow lighting match LTE+ grills.

BLZ-SB1-LTE3-LP/NG

Dimensions: 12½" W x 19½" D x 4½" H

Cutout Dimensions: 11¼" W x 18" D x 2¹³/₁₆" H



LTE+ Built-In Double Side Burner

- Two heavy duty 12,000-BTU brass-plated burners churn out powerful but controlled heat.
- LED-illuminated control system with safety glow lighting match LTE+ grills.
- Stainless steel construction is durable in any outdoor environment.
- Removable stainless steel cover shields burner from outdoor elements when not in use.
- Includes a wind guard to keep burners lit in winds up to 24 MPH.

BLZ-SB2-LTEPLUS-LP/NG

Dimensions: 12½" W x 25" D x 9¾" H

Cutout Dimensions: 11" W x 20¾" D x 8½" H



LTE+ Built-In Power Burner

- 25,000-BTU inner ring and 35,000-BTU outer ring combine for an impressive 60,000 BTUs of efficient heating power.
- Stainless steel guard surrounds the burner rings, protecting them from wind and concentrating heat for maximum effectiveness.
- Powerful design brings water to a boil in half the time compared to other burners on the market.
- Narrow width allows more room in your outdoor kitchen for another component or just additional counter space.
- LED-illuminated control system with safety-glow lighting matches LTE+ grills.

BLZ-PBLTE3-LP/NG

Dimensions: 15¾" W x 23" D x 10½" H

Cutout Dimensions: 14" W x 19½" D x 8" H



GRILL + GRIDDLE

Accessories

Getting the most out of your Blaze grill can be as simple as having the right accessories on hand. Blaze has every upgrade to fully enjoy the elegance, purpose, and strength of our premium outdoor kitchens and grills.



Pizza Stone

TRADITIONAL GRILL

BLZ-PZST

LUX GRILL

BLZ-PRO-PZST-2

Rotisserie Kit

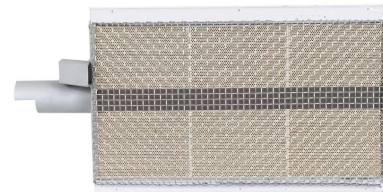
32-INCH GRILL

BLZ-34-ROTIS-SS

40-INCH GRILL

BLZ-5-ROTIS-SS

Infrared Searing Burner

BLZ-IRN

Professional Infrared Searing Burner

BLZ-PRO-IR

Stainless Steel Griddle Plate

14-INCH

BLZ-14-SSGP

24-INCH

BLZ-24-SSGP-2

1/2-Inch Natural Gas Hose with Quick Disconnect

BLZ-NG-HOSE



Smoker Box



BLZ-SMBX
BLZ-XL-SMBX
BLZ-PRO-SMBX
BLZ-XL-PROSMBX
BLZ-PROPRT-SMBX

LED Light Kit



BLZ-4B-LED-AMBER, BLUE, WHITE
BLZ-5LTELED-AMBER, BLUE, WHITE
BLZ-2LED-AMBER, BLUE, WHITE
BLZ-3PROLED-AMBER, BLUE, WHITE

Built-In Grill and Cart Covers



BUILT-IN

3BICV
4BICV
5BICV
3PROBICV
4PROBICV
4LTEPROBICV
5LTEPROBICV
20KMBICV
GRDBICV
GRDLTE3BICV
GRD40BICV
SB2BICV
PBBICV
1PROPRT-CVR
26PZOVN-BICV
26PZOVN-TBCV
SSISLCVR

CART

3CTCV
4CTCV
5CTCV
3PROCTCV
4PROCTCV
4LTEPROCTCV
5LTEPROCTCV
GRDCTCV
GRDLTE3CTCV
GRD40CTCV
26PZOVN-CTCV
KMDOCTCVR





KAMADO

Accessories



Kamado Cart

- Stainless steel construction is durable in outdoor conditions.
- Adds practical storage for your tools and accessories.
- Side shelves provide a convenient work area while grilling.
- Heavy-duty casters allow you to reposition the grill as needed.

BLZ-20-KMDO-CART-SC

Dimensions: 48¼" W x 28¼" D x 38¼" H



Easy-Light Indirect Cooking System With Moisture-Enhancing Pan

- Heavy-duty 304-grade stainless steel construction for lasting durability.
- Charcoal basket lets you section off fuel for indirect heat, or for direct infrared cooking in tandem with the Kamado Rotisserie Kit.
- The lower basket chamber doubles as a chimney starter for use with charcoal lighters and other ignition methods.
- Stainless steel drip pan catches essential drippings for pan gravies and bastes, plus it can act as a water pan for added moisture when smoking.

BLZ-KMDO-CBD RP



4-in-1 Stainless Steel Cooking Plate

- Solid, 304-grade stainless steel brings the longevity you need for years of enjoyable outdoor cooking.
- Provides a layer of heat deflection for low-and-slow cooking.
- Serves as a pizza stone to give you the perfect crust every time.
- Functions as a cooking plate that helps add a hint of smoke to your favorite sauces, stews, soups, and gumbos.
- Can be used as a griddle plate for breakfast and full-crust searing.

BLZ-KMDO-15SSP



Rotisserie Kit With Waterproof Motor

- Waterproof rotisserie motor is designed to thrive in the outdoor elements.
- Compatible with Easy-Light Indirect Cooking System and Moisture-Enhancing Pan.
- Adds versatility to your outdoor cooking setup by allowing you to slow-roast food over the coals.

BLZ-KMDO-2-ROTIS



Stainless Steel Kamado Handles

- Sturdy construction for a long lifespan in the outdoors.
- Offer a solid grip when moving your kamado.
- Feature insulated spacers that keep the handles from getting overly hot when the grill is in use.

BLZ-KMDO-SSHAND



Kamado Covers

- Greatly extends the lifespan of your grill, making it a better investment over time.
- Vinyl cover is water-resistant to shield the grill from elements like dirt, dust, and rain.
- Designed with a soft felt backing that will not scratch the exterior of the grill when covered.

20KMBICV
20KMCTCV
KMDOCTCVR





Kitchen Components

Add safety and functionality to your outdoor kitchen with components that stand on their own.

VENT HOODS

Vent Hoods	34
Duct Covers	35

SAFETY + FUNCTIONAL ESSENTIALS

Wind Guards	36
Drip Pan Flame Guards	36
Island Vent	36
Grill + Griddle Insulated Jackets	37

REFRIGERATION + COOLING

Refrigeration + Cooling	38
Design Upgrades	40

CABINETRY

Roll-Out Trash Drawers	42
Access Doors	42
Access Drawers	43
Combo Door + Drawers	43
Accessory Components	44

The dimensions listed in the following pages are subject to change and should be used for informational purposes only. Please check your product owner's manual to verify cutout information.

**36-INCH/42-INCH/48-INCH**

Vent Hoods



The Outdoor Vent Hoods ensure smoke never creates concern, thanks to a deep hood canopy and powerful motor system.

Designed to assist with dispersing accumulated gases and exhaust, these hoods feature industry-leading 36-inch, 42-inch, or 48-inch depth, offering more coverage of the cooking space to capture larger quantities of smoke and heat.

That much size and power allow our hoods to be installed farther from the grill than other hoods, creating a cleaner and less cluttered cooking area.

BLZ-36-VHOOD2

Dimensions: 36" W x 36" D x 18" H

BLZ-42-VHOOD2

Dimensions: 42" W x 36" D x 18" H

BLZ-48-VHOOD2

Dimensions: 48" W x 36" D x 18" H

- Large canopy depth maximizes the capture range of the vent hood.
- Independent and individually controlled 1,000 CFM, 4-speed motors provide exceptional smoke removal.
- Higher allowable installation height creates a more comfortable work area.
- 4 halogen lights illuminate your cooking surface with 3 lighting temperatures.
- Innovative grease-free controls with lighted facing.
- Reversible motors and back-venting options keep you in constant control.
- Improved grease management system keeps cleanup simple while protecting internal components.
- Redesigned control knobs for easier temperature adjustments.
- Refined interior layout for easier serviceability.



VENT HOOD

Duct Covers

Made to conceal the ventilation ducting in your outdoor kitchen, duct covers create a clean and finished look. These models telescope to the appropriate height of your installation for a seamless fit.

LOW CEILING - 36-INCH

BLZ-36-VHOOD-DCVR-12

Dimensions: 36" W x 18" D x Extends 12"–22½" H

LOW CEILING - 42-INCH

BLZ-42-VHOOD-DCVR-12

Dimensions: 42" W x 18" D x Extends 12"–22½" H

LOW CEILING - 48-INCH

BLZ-48-VHOOD-DCVR-12

Dimensions: 48" W x 18" D x Extends 12"–22½" H

HIGH CEILING - 36-INCH

BLZ-36-VHOOD-DCVR-22

Dimensions: 36" W x 18" D x Extends 22"–41" H

HIGH CEILING - 42-INCH

BLZ-42-VHOOD-DCVR-22

Dimensions: 42" W x 18" D x Extends 22"–41" H

HIGH CEILING - 48-INCH

BLZ-48-VHOOD-DCVR-22

Dimensions: 48" W x 18" D x Extends 22"–41" H



KITCHEN COMPONENTS

Safety + Functional Essentials



Wind Guards

Wind guards protect your grill (and your cook) in high wind areas, such as coastal regions or balconies. This guard helps to ensure the burners stay lit and stable, greatly reducing the risk of flare-ups. Able to withstand 25 mph winds, our wind guards will help to create a more controlled cooking environment.

3-BURNER GRILL
BLZ-WG-25

3-BURNER LUX GRILL
BLZ-PROWG-34

4-BURNER GRILLS
BLZ-WG-32

4-BURNER LUX GRILL
BLZ-PROWG-44

5-BURNER GRILLS
BLZ-WG-40



Drip Pan Flame Guards

These drip tray flame guards add an extra layer of safety to your grill, making it an upgrade worth investing in. This perforated accessory sits inside of the drip tray to reduce the chance of a grease fire, allowing you to cook with confidence.

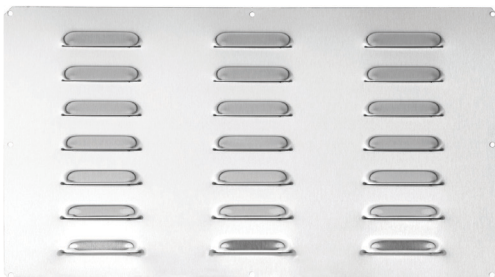
3-BURNER GRILL
BLZ-3-DPFG

3-BURNER LUX GRILL
BLZ-3PRO-DPFG

4-BURNER GRILL
BLZ-4-DPFG

4-BURNER LUX GRILL
BLZ-4PRO-DPFG

5-BURNER GRILL
BLZ-5-DPFG



Island Vent

Designed with commercial-grade 304 stainless steel, the 6" x 14" panels provide adequate airflow to your island. Good for both propane and natural gas, these panels cover ventilation openings for a clean aesthetic.

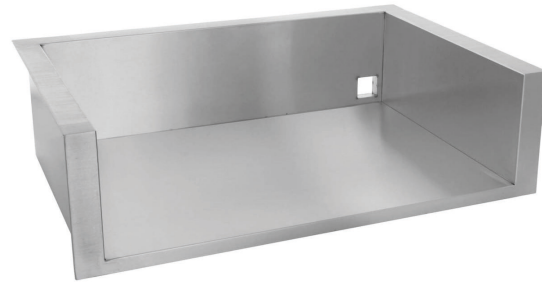
BLZ-ISLAND-VENT
Dimensions: 14" W x 6" H
Cutout Dimensions: 12 $\frac{3}{4}$ " W x 5" H



Grill + Side Burner Insulated Jackets

Our insulated jackets are a safety essential when installing your Blaze gas appliance into a combustible enclosure such as an outdoor kitchen or island.

Plus, in addition to serving as a protective barrier from heat, these stainless steel jackets add a streamlined look to your kitchen or island. Insulated jackets are available for all built-in gas appliances to ensure safety during any style of cooking.



3-BURNER GRILL

BLZ-3-IJ

Dimensions: 27 $\frac{1}{4}$ " W x 23 $\frac{1}{8}$ " D x 9 $\frac{5}{8}$ " H
Cutout Dimensions: 25 $\frac{5}{16}$ " W x 22 $\frac{1}{4}$ " D x 9 $\frac{1}{8}$ " H

4-BURNER GRILL

BLZ-4-IJ

Dimensions: 34 $\frac{7}{8}$ " W x 23 $\frac{1}{8}$ " D x 9 $\frac{3}{4}$ " H
Cutout Dimensions: 33" W x 21 $\frac{1}{4}$ " D x 9 $\frac{3}{4}$ " H

5-BURNER GRILL

BLZ-5-IJ

Dimensions: 42 $\frac{3}{8}$ " W x 23 $\frac{1}{8}$ " D x 9 $\frac{3}{4}$ " H
Cutout Dimensions: 40 $\frac{3}{4}$ " W x 21 $\frac{1}{4}$ " D x 9 $\frac{3}{4}$ " H

3-BURNER LUX GRILL

BLZ-3PRO-IJ

Dimensions: 36 $\frac{3}{4}$ " W x 25 $\frac{9}{16}$ " D x 11 $\frac{3}{8}$ " H
Cutout Dimensions: 34 $\frac{3}{4}$ " W x 24 $\frac{1}{16}$ " D x 11" H

4-BURNER LUX GRILL

BLZ-4PRO-IJ

Dimensions: 46 $\frac{1}{2}$ " W x 25 $\frac{7}{8}$ " D x 11 $\frac{3}{8}$ " H
Cutout Dimensions: 44 $\frac{7}{8}$ " W x 24 $\frac{1}{16}$ " D x 11" H

4-BURNER LTE PRO GRILL

BLZ-4-IJ2

Dimensions: 34 $\frac{3}{4}$ " W x 22 $\frac{1}{2}$ " D x 10" H
Cutout Dimensions: 33 $\frac{3}{8}$ " W x 21 $\frac{1}{4}$ " D x 10" H

5-BURNER LTE PRO GRILL

BLZ-5-IJ2

Dimensions: 42" W x 22 $\frac{5}{8}$ " D x 10" H
Cutout Dimensions: 40 $\frac{3}{8}$ " W x 21 $\frac{1}{4}$ " D x 9 $\frac{5}{8}$ " H

SIDE BURNER

BLZ-SB2-IJ

Dimensions: 14 $\frac{3}{4}$ " W x 23 $\frac{1}{8}$ " D x 9 $\frac{5}{8}$ " H
Cutout Dimensions: 13 $\frac{1}{4}$ " W x 22 $\frac{1}{8}$ " D x 9 $\frac{1}{8}$ " H

POWER BURNER

BLZ-PB-IJ

Dimensions: 18 $\frac{1}{8}$ " W x 21 $\frac{3}{8}$ " D x 9" H
Cutout Dimensions: 16 $\frac{1}{2}$ " W x 20 $\frac{1}{2}$ " D x 8 $\frac{3}{4}$ " H

LUX POWER BURNER GRILL

BLZ-PROPB-IJ

Dimensions: 18 $\frac{1}{8}$ " W x 21 $\frac{3}{8}$ " D x 10 $\frac{1}{4}$ " H
Cutout Dimensions: 16 $\frac{1}{2}$ " W x 20 $\frac{1}{2}$ " D x 9 $\frac{3}{4}$ " H

LTE GRIDDLE

BLZ-GRIDDLE-IJ

Dimensions: 32 $\frac{3}{8}$ " W x 26 $\frac{3}{8}$ " D x 13 $\frac{1}{8}$ " H
Cutout Dimensions: 30 $\frac{5}{8}$ " W x 25" D x 12 $\frac{3}{4}$ " H

LTE+ GRIDDLE

BLZ-GRIDDLE-IJ2

Dimensions: 32 $\frac{1}{2}$ " W x 26 $\frac{1}{2}$ " D x 11 $\frac{1}{2}$ " H
Cutout Dimensions: 31" W x 25 $\frac{1}{4}$ " D x 11 $\frac{1}{4}$ " H

LTE PRO GRIDDLE

BLZ-GRIDDLE40-IJ

Dimensions: 41 $\frac{3}{4}$ " W x 26 $\frac{1}{2}$ " D x 11 $\frac{1}{2}$ " H
Cutout Dimensions: 40 $\frac{1}{8}$ " W x 25 $\frac{1}{4}$ " D x 11 $\frac{1}{4}$ " H

OUTDOOR OVEN

BLZ-26-PZOVN-IJ

Dimensions: 28 $\frac{1}{2}$ " W x 26 $\frac{3}{8}$ " D x 9 $\frac{1}{8}$ " H
Cutout Dimensions: 26 $\frac{3}{4}$ " W x 25 $\frac{1}{16}$ " D x 8 $\frac{3}{4}$ " H



KITCHEN COMPONENTS

Refrigeration + Cooling

Blaze kitchen refrigeration and cooling components provide you space with convenient access to chilled beverages and more while offering your outdoor island a sleek, streamlined aesthetic.

Featuring ample storage space in varied configurations, each refrigerator offers powerful qualities like premium 304-grade stainless steel construction, crystal-clear white LED interior lighting, intuitive digital thermostats with temperature displays, and Blaze's top-notch 1-year limited warranty and sterling customer service.



15-In 3.2 Cu. Ft. Outdoor Rated Refrigerator

- Holds up to 74 cans for generous crowd refreshment.
- Slim design is ideal for intimate spaces, creating a sleek look for any setting.

BLZ-SSRF-15

Dimensions: 15 $\frac{1}{8}$ " W x 25 $\frac{1}{2}$ " D x 34 $\frac{1}{8}$ " H
Cutout Dimensions: 17 $\frac{1}{8}$ " W x 25 $\frac{3}{4}$ " D x 35 $\frac{1}{8}$ " H



20-In 4.4 Cu. Ft. Compact Refrigerator

- Holds up to 100 cans at once.
- Built compact without sacrificing quality.

BLZ-SSRF-126

Dimensions: 20 $\frac{1}{2}$ " W x 20 $\frac{3}{4}$ " D x 32 $\frac{3}{4}$ " H
Cutout Dimensions: 22 $\frac{1}{2}$ " W x 22 $\frac{3}{4}$ " D x 33 $\frac{3}{4}$ " H



23.5-In 5.1 Cu. Ft. Outdoor Rated Double Drawer Refrigerator

- Holds up to 154 cans at once.
- Smooth, soft-close doors.
- Drawers include adjustable divider.

BLZ-SSRF-DBDR5.1

Dimensions: 24" W x 25 $\frac{3}{4}$ " D x 34 $\frac{1}{8}$ " H
Cutout Dimensions: 26" W x 24 $\frac{3}{4}$ " D x 35 $\frac{1}{8}$ " H



20-Inch 4.3 Cu. Ft. Compact Fridge

No outdoor kitchen is complete without the new 20-Inch 4.3 Cu. Ft. Compact Fridge. Featuring updated branding, a sleek, stylish design, and spacious interior, this fridge can hold all your food and beverages. With its durable construction and outdoor rating, this fridge is perfect for any kitchen configuration or as a standalone unit.

- LED interior digital controller displays the refrigerator's precise temperature.
- Capacity to hold 100 cans + interior lighting for greater visibility at any time of day.
- Locking mechanism + automatic alarm to alert you if the door is left ajar.
- Temperature range of 34–50°F, perfect for storing meat + beverages as needed.
- Reversible door handle and zero tolerance hinge allows the door to close flush.
- Flexible shelf positions let you organize the fridge your way.
- Durably built and outdoor rated for years of reliable use in any weather conditions
- Updated warranty protects the non-consumable compressor for 5 years, other non-consumable parts for 2 years, and offers replacement for 1 year.

BLZ-SSRF20-4.3

Dimensions: 20 $\frac{5}{8}$ " W x 24 $\frac{1}{2}$ " D x 33 $\frac{1}{8}$ " H

Cutout Dimensions: 22 $\frac{5}{8}$ " W x 24 $\frac{1}{2}$ " D x 34 $\frac{1}{8}$ " H



20-Inch 4.5 Cu. Ft. Beverage Cooler

Add a sophisticated touch to your outdoor setup with the new 20-Inch 4.5 Cu. Ft. Beverage Cooler. Inspired by our modern new brand look, this unit is designed to efficiently store your wines, beers, and more at the perfect temperature. Plus, its durable construction and outdoor rating promise reliable use for years to come.

- LED interior digital controller displays the refrigerator's precise temperature.
- Capacity to store 147 cans or 30 wine bottles + interior lighting for increased visibility.
- Locking mechanism + automatic alarm to alert you if the door is left ajar.
- Temperature range of 34–68°F, ideal for storing both red and white wines.
- Reversible door handle and zero tolerance hinge allows the door to close flush.
- Adjustable wire shelves give you complete control of the storage configuration.
- Energy Star™ and outdoor rated for efficient, reliable use in any outside conditions.
- Updated warranty protects the non-consumable compressor for 5 years, other non-consumable parts for 2 years, and offers replacement for 1 year.

BLZ-GDBEV20-4.5

Dimensions: 20 $\frac{5}{8}$ " W x 24 $\frac{1}{2}$ " D x 33 $\frac{1}{8}$ " H

Cutout Dimensions: 22 $\frac{5}{8}$ " W x 24 $\frac{1}{2}$ " D x 34 $\frac{1}{8}$ " H





KITCHEN COMPONENTS

Refrigeration + Cooling (cont'd)

**24-In 5.5 Cu. Ft. Outdoor Rated Refrigerator**

- Spacious solution for stockpiling or for supplying larger events.
- Holds up to 152 cans for entertaining even the thirstiest party-goers.

BLZ-SSRF-5.5

Dimensions: 24" W x 25½" D x 34⅞" H

Cutout Dimensions: 26" W x 24½" D x 35⅞" H

**24-In 5.5 Cu. Ft Outdoor Rated Beverage Cooler**

- Holds up to 84 cans and 22 wine bottles, or 42 cans and 62 wine bottles—easily satisfying the varied tastes of diverse crowds.
- Choose bamboo shelving or glass shelves for personalized aesthetics.
- Bamboo shelving option easily converts the beverage center into a wine fridge.

BLZ-GDBEV-5.5

Dimensions: 24" W x 25½" D x 34⅞" H

Cutout Dimensions: 26" W x 24½" D x 35⅞" H

**50-Lb 15-In Outdoor Rated Ice Maker**

- Produces up to 50 lb of cube-shaped ice per day.
- Energy Star™ rating saves on operating costs.
- Front-venting allows for installation straight into your kitchen island.
- Internal "cool blue" LED light adds style.

BLZ-ICEMKR-50GR

Dimensions: 14⅝" W x 25" D x 33" H

Cutout Dimensions: 16¾" W x 24¼" D x 34¼" H

DESIGN UPGRADES:**Stainless Steel Door Sleeve Upgrade for 20-In 4.4 Cu. Ft. Fridge**

- Upgrade your 20-In 4.4 Cu. Ft. Compact Refrigerator with this stainless steel fridge door upgrade kit.

BLZ-SSFP-126/126LH**Stainless Steel Fridge Trim Kits****BLZ-TRIMKIT-126****BLZ-TRIMKIT-5.5/BEV5.5****BLZ-TRIMKIT-DR5.1****BLZ-TRIMKIT-4.3/4.5****BLZ-TRIMKIT-15****BLZ-TRIMKIT-ICEMKR****BLZ-TK15-3.2****BLZ-TK20-126-4.4****BLZ-TK20-4.3/4.5****BLZ-TK24-5.5/5.1****BLZ-TK15-50LB**





CABINETY

Roll-Out Trash Drawers

Available as single trash/propane storage drawer, double trash/recycle drawer, and narrow single trash drawer models.



18-Inch Single Trash/Propane Drawer

BLZ-TRLP-DRW-H

Dimensions:

20" W x 17 $\frac{3}{4}$ " D x 26 $\frac{1}{2}$ " H

Cutout Dimensions:

18 $\frac{3}{8}$ " W x 15 $\frac{1}{2}$ " D x 24 $\frac{1}{4}$ " H



Double Trash/Recycle Drawer

BLZ-TREC-DRW-H

Dimensions:

19 $\frac{7}{8}$ " W x 24 $\frac{3}{8}$ " D x 26 $\frac{1}{2}$ " H

Cutout Dimensions:

18 $\frac{1}{4}$ " W x 23 $\frac{1}{8}$ " D x 24 $\frac{1}{8}$ " H



Narrow Trash Drawer

BLZ-TRNW-DRW-H

Dimensions:

14" W x 20 $\frac{3}{4}$ " D x 26 $\frac{1}{2}$ " H

Cutout Dimensions:

11 $\frac{3}{4}$ " W x 18 $\frac{5}{8}$ " D x 24 $\frac{1}{8}$ " H

Access Doors

All Blaze cabinetry is produced in the USA and comes standard with soft-close doors and drawers equipped with automatic on/off LED lights.



Single Access Vertical Doors

18-INCH

BLZ-SV-1420-R-SC

Dimensions:

16 $\frac{3}{8}$ " W x 4 $\frac{3}{4}$ " D x 22 $\frac{1}{2}$ " H

Cutout Dimensions:

14 $\frac{1}{8}$ " W x 2 $\frac{1}{2}$ " D x 20 $\frac{1}{8}$ " H

21-INCH

BLZ-SINGLE-2417-R-SC

Dimensions:

19 $\frac{3}{8}$ " W x 4 $\frac{7}{8}$ " D x 26 $\frac{1}{2}$ " H

Cutout Dimensions:

17 $\frac{1}{8}$ " W x 2 $\frac{1}{2}$ " D x 24 $\frac{1}{8}$ " H



Single Access Horizontal Doors

28-INCH

BLZ-SH-2417-R-SC

Dimensions:

26 $\frac{1}{2}$ " W x 4 $\frac{7}{8}$ " D x 19 $\frac{3}{8}$ " H

Cutout Dimensions:

24 $\frac{1}{8}$ " W x 2 $\frac{1}{2}$ " D x 17 $\frac{1}{8}$ " H



Double Access Doors

25-INCH

BLZ-AD25-R-SC

Dimensions: 23 $\frac{1}{2}$ " W x 4 $\frac{3}{4}$ " D x 20 $\frac{3}{8}$ " H

Cutout Dimensions: 21 $\frac{3}{8}$ " W x 2 $\frac{1}{2}$ " D x 18" H

32-INCH

BLZ-AD32-R-SC

Dimensions: 30 $\frac{7}{8}$ " W x 4 $\frac{3}{4}$ " D x 20 $\frac{3}{8}$ " H

Cutout Dimensions: 28 $\frac{3}{4}$ " W x 2 $\frac{1}{2}$ " D x 18" H

40-INCH

BLZ-AD40-R-SC

Dimensions: 37 $\frac{7}{8}$ " W x 4 $\frac{3}{4}$ " D x 20 $\frac{3}{8}$ " H

Cutout Dimensions: 35 $\frac{7}{8}$ " W x 2 $\frac{1}{2}$ " D x 18" H



Access Drawers

Blaze sliding drawers feature an easy-close assist mechanism that shuts drawers with a soft touch as well as a light source.



16-Inch Double Access Drawer

BLZ-DRW2-R-LT

Dimensions:
17³/₈" W x 22³/₄" D x 21⁵/₈" H
Cutout Dimensions:
15¹/₂" W x 20¹/₄" D x 19¹/₂" H



16-Inch Triple Access Drawer

BLZ-DRW3-R-LT

Dimensions:
17³/₈" W x 22³/₄" D x 29³/₄" H
Cutout Dimensions:
15¹/₂" W x 20¹/₄" D x 27¹/₂" H



30-Inch Triple Access Drawer

BLZ-30W-3DRW-LT

Dimensions:
30¹/₈" W x 22¹/₂" D x 29³/₄" H
Cutout Dimensions:
28¹/₄" W x 20¹/₈" D x 27³/₄" H

Combo Door + Drawers

Available in a 32" double-drawer and 39" triple-drawer model, complete with an easy-close assist design that softly shuts the sliding drawers to prevent damage.



32-Inch Access Door + Double Drawer Combo

BLZ-DDC-R-LTSC

Dimensions: 32³/₈" W x 22³/₄" D x 21¹/₄" H
Cutout Dimensions: 30¹/₄" W x 20¹/₄" D x 19¹/₈" H



39-Inch Access Door + Triple Drawer Combo

BLZ-DDC-R-39-LTSC

Dimensions: 39¹/₄" W x 22³/₄" D x 21³/₈" H
Cutout Dimensions: 37¹/₄" W x 20¹/₈" D x 19¹/₈" H



CABINETS

Accessory Components



Kamado Island Sleeve With Drawer

- 304 stainless steel construction provides ultimate durability in outdoor settings.
- Large drawer stores charcoal, tools, and accessories with ease.
- Allows you to build your kamado into an outdoor kitchen for a finished look.

BLZ-KMDO-SLV-LT

Dimensions: 34" W x 32½" D x 33⅞" H

Cutout Dimensions: 31¼" W x 29⅝" D x 33¼" H



Ice Drawer

- Stainless steel slide-out ice drawer offers ample storage for your beverages and holds up to 50 lb of ice.

BLZ-ICE-DRW-H

Dimensions: 27¾" W x 22⅞" D x 21½" H

Cutout Dimensions: 26⅝" W x 19⅞" D x 19¾" H



Beverage Center

- Hot/cold water faucet + built-in soap dispenser.
- Sliding, removable cutting board + bottle opener and cap catcher.
- Removable, 3-part condiment tray + towel rack.
- Insulated ice bin + front bottle storage with drain holes for access and cleaning.

BLZ-30CKT-SNK

Dimensions: 30" W x 29" D x 24" H

Cutout Dimensions: 28¼" W x 23" D x 9" H



Paper Towel Holder

BLZ-PTH-R-H

Dimensions: 16" W x 10½" D x 9¾" H

Cutout Dimensions: 14⅞" W x 8⅞" D x 8¾" H



Dry Storage Cabinet

BLZ-DRY-STG2-SC

Dimensions: 32¼" W x 23½" D x 21¼" H

Cutout Dimensions: 29⅞" W x 21⅞" D x 18¼" H







Kitchen Islands

Fully loaded and easy-to-assemble, our outdoor kitchens feature configurations to suit your specific style and space.

MODULAR ISLANDS

LTE+ Outdoor Kitchen Collection 48

INSTANT ISLAND

Stainless Steel Outdoor Kitchen 49

The dimensions listed in the following pages are subject to change and should be used for informational purposes only. Please check your product owner's manual to verify cutout information.



MODULAR ISLANDS

LTE+ Outdoor Kitchen Collection

They're more than outdoor kitchens. They are the result of hundreds of hours of meticulous research and an unyielding drive to enhance your outdoor cooking experience.

Each of these five kitchen configurations consists of easy-to-assemble modules and combines the quality and efficiency of a premium LTE+ grill with an ultra-luxury pre-made structure. It's everything you'd expect from a Blaze outdoor kitchen collection—and a little more for good measure.

FEATURES:

NACRAE™ Finish (2 options)

Full interior + exterior super durable anti-microbial powder coating on all components.



Gunmetal



Architectural Bronze

Dekton® Countertop (2 options)

2 cm thick, non-porous material with resistance to UV rays, extreme heat and cold, plus scratches and stains.



Keon



Aeris

LTE+ Gas Grill

Available in 4 or 5-burner models, with a 4-burner marine grade option.

24-Inch Outdoor Rated Refrigerator

5.5 cu. ft. stainless steel compact fridge.

16.5-Inch Outdoor Rated Sink + Faucet

Stainless steel w/ hot + cold water connections.



Sunrise

8' Cabinetry



Morning Glow

10' Fridge + Cabinetry



High Noon

10' Cabinetry



Golden Hour

10' Cabinetry Fridge + Sink



Sunset

10' Sink + Cabinetry

INSTANT ISLAND

Stainless Steel Outdoor Kitchen



The Stainless Steel Outdoor Kitchen Island allows you to add an outdoor kitchen island to your home without any of the hard work.

Designed to be set and ready in an hour, this island doesn't require surveying, pouring concrete, framing an island or cabinets, applying a stone or brick facing, or installing a countertop.

Best of all, it's made to fit the 32-inch built-in BCM, LTE+, and LTE PRO grills.

Its stainless steel construction and ample storage make for a clean, complete unit that is just as easily disassembled as it is constructed, should you move or want to change locations.

The Stainless Steel Outdoor Kitchen Island does not include a grill. Each component is sold separately.

- Handcrafted in the USA.
- Constructed with rust and corrosion resistant 304 stainless steel.
- Complete with an under-the-grill cabinet and multiple soft-close drawers for ample storage space, plus a pull-out trash bin.
- Backed by a best-in-class, lifetime warranty.

BLZ-SS-ISLAND-RO

Dimensions: 72 $\frac{5}{8}$ " W x 23 $\frac{7}{8}$ " D x 34 $\frac{1}{4}$ " H



KITCHEN ISLANDS





Outdoor Living

Premium performance and exceptional design aren't just reserved for our grills and kitchens—our fire fixtures prove it.

FIRE FIXTURES

Fire Pit Table	52
Fire Bowl.....	53

The dimensions listed in the following pages are subject to change and should be used for informational purposes only. Please check your product owner's manual to verify cutout information.



60-INCH

Fire Pit Table



Create a cozy space to commune with the Fire Pit Table, beautifully handcrafted in the USA.

Made from glass fiber reinforced concrete (GFRC), this unit offers a simplified silhouette and a weathered, rustic finish, fitted with a brass burner system.

It is uniquely designed with a convenient access door to conceal an included 11-pound propane tank, and its exclusive phantom finish complements any outdoor aesthetic.

BLZ-60-FTABLE-LP/NG

Dimensions: 30" W x 60" L x 19" H

- Constructed of ultra-durable glass-fiber reinforced concrete (GFRC) that is heat, weather, and rust resistant.
- Heat output of 60,000 BTUs with propane or natural gas versions efficiently maintains temperatures.
- Maximum burn time of 12 hours on low and a minimum of 4 hours on high.
- CSA-certified to meet the highest industry standards and our own.
- Comes with an 11-pound propane tank, a protective cover, and lava rock media.
- Key valve and match-lit ignition for simple lighting.
- Provides our tallest, brightest, and fullest flame.
- Unit is safe for use on wooden decks.
- Backed by a 5-year limited warranty on the fire table body and 2-year limited warranty on internal components.
- Handcrafted by skilled artisans in the USA.

38-INCH

Fire Bowl



The Fire Bowl is constructed in an elegant rustic finish that fits beautifully into all backyard settings.

Handcrafted in the USA by skilled artisans, this fire bowl features a premium brass burner and is available for use with either propane or natural gas.

Its phantom color complements any outdoor decor, and the battery-operated push-button ignition makes it simple to use in any situation.

BLZ-38-FBOWL-LP/NG

Dimensions: 38" W x 38" L x 14½" H

BLZ-38-FBOWL-LP-TCOVER

Dimensions: 21½" W x 21" D x 18" H

- Heat output of 120,000 BTUs propane or 85,000 BTUs with natural gas.
- Handcrafted in the USA, constructed of glass-fiber reinforced concrete (GFRC), and fitted with an inner steel frame and brass burner system.
- Maximum burn time of 7 hours on low and a minimum of 3.5 hours on high.
- CSA-certified to meet the highest industry standards and our own.
- Matching 20 lb propane tank cover that doubles as an end table, sold separately.
- Includes fire bowl leveling feet and brass burner, lava rock media, vinyl storage cover, and lifting strap.
- Battery-operated push-button ignition makes lighting simple.
- Heat, weather, and rust-resistant to ensure unit is protected against the elements.
- Backed by a 5-year limited warranty on the fire bowl body and 2-year limited warranty on internal components.





OUTDOOR KITCHENS + GRILLS

Blaze has a new look to reflect our commitment to innovation and crafting the most efficient outdoor living products. It may be a different aesthetic, but we're the same Blaze.

3401 Oak Villa Blvd. Baton Rouge, LA 70814
Toll Free: 1-866-976-9510
customerservice@blazegrills.com

Copyright © January 2026 Blaze®. All Rights Reserved.